

best color proof™

Proof the reality



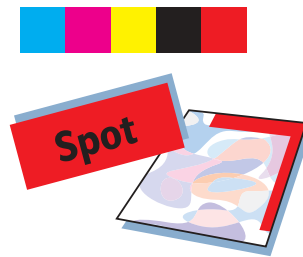
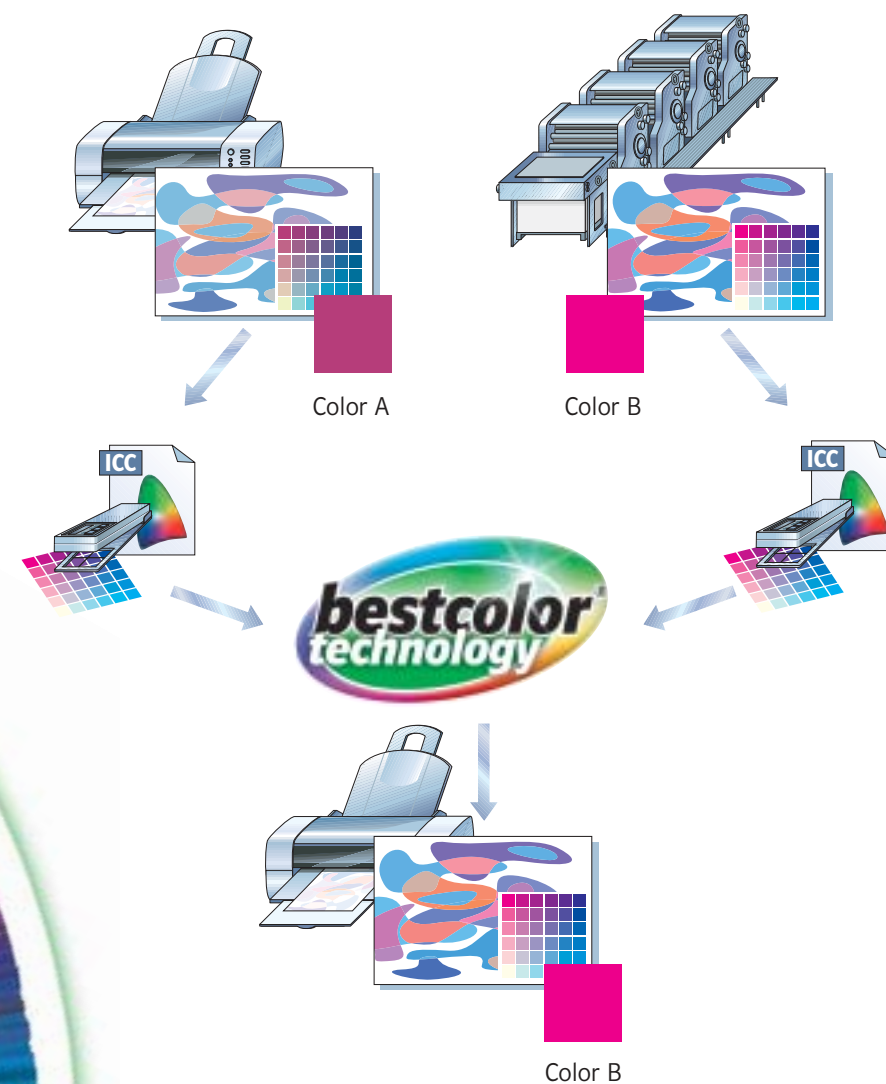
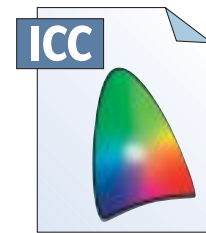


The printing industry today is moving more and more to the »computer-to« workflow, where image files are prepared and sent directly from a computer to an imagesetter or a press. The goal being to eliminate consumables, reduce labor costs and streamline the work involved in getting a job to press. The constant control of one's own work, plus the presentation of the results to the client, has become easier and more reliable thanks to Bestcolor® Technology.

Best Colorproof™, combined with an inkjet or laser printer, provides customers with an affordable proofing system that meets the demands of most digital workflows. Best Colorproof enables users to have a color-accurate and repeatable proof at a fraction of the cost of traditional analog or digital proofing systems.

Support of ICC Profiles

Best Colorproof uses the international industry standard of the International Color Consortium (ICC) in order to produce color-accurate proofs on any supported inkjet or laser printer. To achieve this, Best Colorproof uses a paper profile for the local proofing device and a reference profile that defines the final output device or process. A wide range of paper and reference profiles are included on the Best Colorproof CD. Custom ICC profiles from any third party ICC-compliant profiling software can be used to meet your customers' highest expectations.

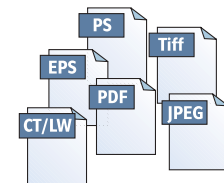


Spot Colors

Besides the standard CMYK, Best Colorproof supports up to twelve spot colors in the same job. Spot colors are defined in a table using CMYK or CIELAB values. The most common spot colors have already been pre-defined, but you can customize the table whenever needed. No extra treatment is needed when spot colors are required!

»Base« Linearization is the Foundation...

Linearization is the first step for an ICC workflow to perform accurately and repeatedly. Best Colorproof utilizes two different linearization methods: Base Linearization and Printer Linearization. Base Linearization is used prior to any custom profiling and Printer Linearization is used after to keep the printer calibrated. Both methods are easily accessible through the Best Colorproof Linearization Wizard. Using the Best Colorproof linearization routines with the latest color measurement equipment ensures accurate and consistent color proofs.

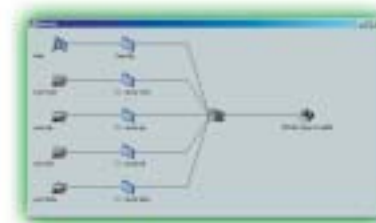


Supported File Formats

Best Colorproof supports all common file formats. These include composite and separated PostScript, EPS, PDF, TIFF, TIFF-IT, JPEG, Scitex CT/LW, and Delta-Lists.

High-end Output

In order to guarantee optimized output quality, Best Colorproof ships with customized printer drivers for all of its supported printers. Printers that are supported by Best Colorproof have to meet specific criteria and are tested to ensure that they meet the needs of the professional pre-press industry. Best Colorproof supports inkjet printers with six or more colors. This ensures that proofs produced with inkjets contain the finest details and color blends, even in the highlight areas.



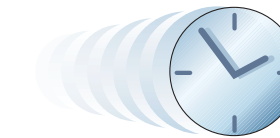
Functionality & Reliability

Best Colorproof can be configured in many different ways. Customers can use up to 15 different queues containing several different configurations. These configurations can be pre-defined to reflect different output options including resolution, paper type, paper and reference ICC profiles.



Speed of Output

Best Colorproof can RIP and print on-the-fly when running on an Intel Pentium III dual-processor computer with a speed of 1 GHz or higher. You will receive your printout immediately after the calculation as finished.



New Preview Mode

Best Colorproof incorporates a color managed Print Preview. Users can now preview files on screen for design details and color accuracy, when using a calibrated and profiled monitor.

Save Time and Money

Best Colorproof contains features to enhance the production of proofs. The Nesting feature allows various files to be arranged and placed on the same sheet. The Repeat feature enables multiple copies of the same image to be placed as many times as needed on a single page. These functions help conserve space, materials and overall production time.





Available Versions

Best Colorproof M

The ideal solution for proofing with a desktop inkjet. This version supports desktop inkjet printers up to A2 format.



Best Colorproof XL

Supports various inkjet printers up to 24" (61 cm) wide, including those supported by Best Colorproof M.



Best Colorproof XXL

The most popular version of Best Colorproof as it supports various inkjet printers up to 63" (160 cm) wide, including those supported by Best Colorproof M and XL.



Best Colorproof Laser

Designed specifically to drive laser printers to produce color accurate proofs or production output. Best Colorproof Laser is an excellent choice for companies who are looking to have a proofing solution that is flexible, fast and color-accurate.



Best Colorproof M supported printers:

Canon	→ BJC-8500
Epson	→ Stylus Color 1520, 3000 Stylus Pro 5000, 5500
Hewlett-Packard	→ designjet colorpro ga, 10ps, 20ps

Best Colorproof XL supported printers:

Agfa	→ Sherpa 24
Canon	→ BJC-8500
Encad	→ Chroma 24
Epson	→ Stylus Color 1520, 3000 Stylus Pro 5000, 5500, 7000, 7500
Hewlett-Packard	→ designjet colorpro ga, 10ps, 20ps

Best Colorproof XXL supported printers:

Agfa	→ Agfa Sherpa, Sherpa II, Sherpa 24, 43, 62
Canon	→ BJC-8500
Encad	→ Novajet 2, 3, 4, Novajet Pro 36, 42, 50, 60, 600, 700, 850, Chroma 24
Epson	→ Stylus Color 1520, 3000, Stylus Pro 5000, 5500, 7000, 7500, 9000, 9500, 10000, 10000CF
Hewlett-Packard	→ designjet colorpro ga, 650, 750, 755, 800, 800PS, 1050, 1055, 2000, 2500, 2800, 3000, 3500, 3800, 5000, 5000ps, 10ps, 20ps
Kodak	→ Professional Large Format 2042, 2060, 3038, 3043, 3062
Mutoh	→ RJ-4000, 4100, 6100
Roland	→ HI-FI Jet FJ-40, 42, 50, 52, 400, 500, 600

Best Colorproof Laser supported printers:

Epson	→ AcuLaser C8500, ColorPage EPL-C8000, C8200
OKI	→ C9400

New printers are added regularly. Visit www.bestcolor.com for a current listing of supported printers.

»Thanks to Best Colorproof, we literally switched overnight from an analog to a digital proofing solution. Best Colorproof has improved color accuracy, saved us time and money, and I would recommend their RIP to anyone.«

James Kober, Newsday

System recommendation

- 800 MHz Pentium III PC
 - Windows NT4.0 / Windows 2000 Server
 - 256 MB RAM
 - 4 GB free space on hard disk
 - CD-ROM or DVD-ROM drive
 - 1 available USB Port
 - VGA compatible graphic card
 - 10/100 MBit network interface card
- (With Windows 98/ME/NT4/XP Workstation & Windows 2000 Workstation you will need special software to connect to an Apple Macintosh network!)



Headquarter:
Best GmbH

Meissenstrasse 65
D-47803 Krefeld
Germany

phone: +49 - 21 51 - 76 27 - 100
fax: +49 - 21 51 - 76 27 - 200
email: info@bestcolor.com

US Subsidiary:
Bestcolor USA Inc.

8080 Beckett Center Drive, Suite 328
West Chester, OH 45069
USA

phone: +1 - 513 - 942 - 7111
fax: +1 - 419 - 730 - 7232
email: info-us@bestcolor.com

Asia Subsidiary:

Bestcolor Asia Sdn Bhd (Comp.-No: 557915-T)

#12 Ground Floor, Equatorial
1 Jalan Bukit Jambul, Bayan Lepas
11900 Penang, Malaysia

phone: +604 - 390 - 74 70
fax: +604 - 390 - 77 48
email: info-asia@bestcolor.com

www.bestcolor.com

Subject to technical changes and errors excepted.

© 2002 Best GmbH. The Best logo is the copyright of Best GmbH. All Best products are a trademark of Best GmbH. Bestcolor and Best ProfileKeeper are registered trademarks of Best GmbH.

The names of products of other manufacturers may be trademarks of their respective holders.